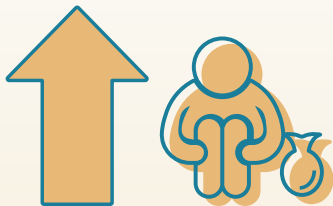
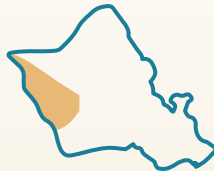


Point in Time Count

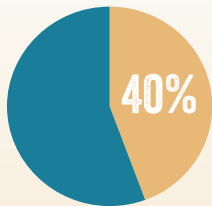
Native Hawaiian Sub-Report Highlights



Native Hawaiians experiencing homelessness from 2022 – 2023 **up 16%** (unsheltered up 39%, sheltered up 2%)



Region 7 (Wai'anae Coast and Nānākuli) has the largest number of Native Hawaiians experiencing homelessness (410), 216 of whom are unsheltered, accounting for **36% of all Native Hawaiians experiencing homelessness** islandwide.



Native Hawaiians have **consistently** accounted for about **40% of the population experiencing homelessness** over the past six years.



Native Hawaiians reported higher rates of all causes for homelessness with **Health-Related causes being the greatest**.