

# HAWAII VOTES BY MAIL

## IMPORTANT DATES TO REMEMBER:

**JULY 9** FINAL DAY TO REGISTER TO RECEIVE BALLOT BY MAIL  
go to [olvr.hawaii.gov](http://olvr.hawaii.gov) to register online

**JULY 21** CHECK YOUR MAIL!  
Delivery of ballot packages begin

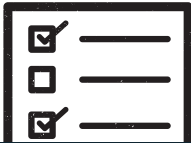
**AUG 5** PLACE YOUR BALLOT IN THE MAIL BY THIS DATE!  
Ballots must be received by August 8 at 7:00 pm



ALOHA  
RISING  
VOTE 2020

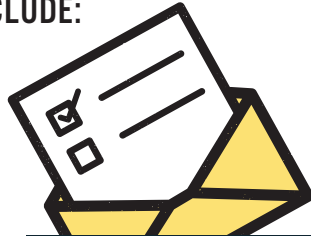
## HOW TO VOTE BY MAIL

YOUR MAIL BALLOT WILL INCLUDE:



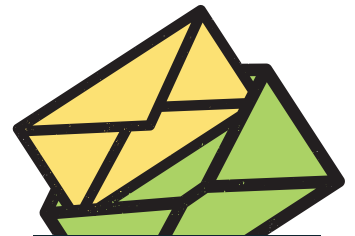
### 1. BALLOT

Before voting your ballot, review instructions and the contests and candidates on both sides of the ballot. To vote, completely darken in the box to the left of the candidate using a black or blue pen.



### 2. SECRET BALLOT ENVELOPE

After voting your ballot, re-fold it and seal it in the secret ballot envelope. The secret ballot envelope ensures your right to secrecy as the ballots are opened and prepared for counting. Once sealed, place the secret ballot envelope in the return envelope.



### 3. RETURN ENVELOPE

Read the affirmation statement and sign the return envelope before returning it to the Clerk's Office. Upon receipt of your return envelope, the Clerk's Office validates the signature on the envelope. After your signature is validated your ballot will be counted.

## RETURNING YOUR VOTED BALLOT BY MAIL:

The return envelope is postage paid via the U.S. Postal Service and addressed to your Clerk's Office. Your ballot should be mailed 2-3 days prior to Election Day to ensure it is received by the deadline, August 8th by 7:00 pm.



FOR MORE INFO PLEASE VISIT:  
[ELECTIONS.HAWAII.GOV](http://ELECTIONS.HAWAII.GOV)  
OR  
[WWW.OHA.ORG/VOTE](http://WWW.OHA.ORG/VOTE)