

# HA'AWINA 'ŌLELO 'ŌIWI: LEARN HAWAIIAN

HO'OLAKO 'IA E HA'ALILIO SOLOMON - KAHA KI'I 'IA E DANNII YARBROUGH

## SELF-INTRODUCTION: KAMEHAMEHA II

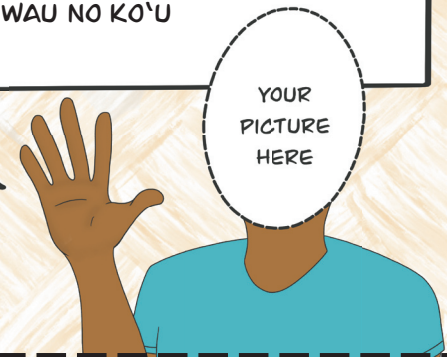
ALOHA MAIKA'I KĀKOU! 'O LIHOLIHO KO'U INOA.  
'O KEŌPŪOLANI KA INOA O KO'U MAKUAHINE, 'O  
KAMEHAMEHA KA INOA O KO'U MAKUAKĀNE. NO HILO,  
HAWAI'I MAI WAU. UA NOHO WAU I KAILUA, KONA. HE  
MŌ'Ī WAU NO KE AUPUNI O KO HAWAI'I PAE'ĀINA. HE  
IWAKĀLUAKŪMĀHIKU O'U MAKAHIKI. HE KAIKUA'ANA  
WAU NO KO'U KAIKAINA, 'O KAUIKEAOULI KONA INOA.



## HO'OLAUNA MAI 'OE: INTRODUCE YOURSELF!

In this paragraph, fill in the blanks to introduce yourself. You can even take a selfie to paste in the blank space! Use the list of words in the bottom right corner of this page for help, and for additional vocabulary, visit [wehewehe.org](http://wehewehe.org).

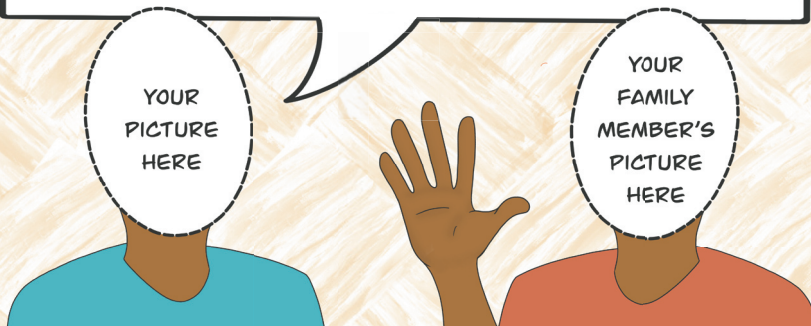
ALOHA KĀKOU A NUI LOA! 'O (YOUR NAME) KO'U INOA.  
'O (NAME OF MOTHER) KA INOA O KO'U MAKUAHINE,  
'O (NAME OF FATHER) KA INOA O KO'U MAKUAKĀNE.  
NO (BIRTHPLACE) MAI WAU. NOHO WAU I (PLACE OF  
CURRENT RESIDENCE). HE (OCCUPATION/SOCIAL  
ROLE) NŌ HO'I WAU. HE (AGE) O'U MAKAHIKI. HE  
(YOUR FAMILY ROLE) WAU NO KO'U  
(FAMILY MEMBER).



## HO'OLAUNA PILIKANA: INTRODUCE YOUR FAMILY

In this paragraph, fill in the blanks to introduce a family member of yours. You can even take a picture and paste it in the space to introduce them!

ALOHA MAI KĀKOU! 'O (NAME OF FAMILY MEMBER) KĒIA.  
'O IA NŌ HO'I KO'U (FAMILY ROLE IN RELATION TO YOU). 'O  
(NAME OF HIS/HER MOTHER) KA INOA O KONA MAKUAHINE,  
'O (NAME OF HIS/HER FATHER) KA INOA O KONA MAKUAKĀ  
NE. NO (BIRTHPLACE) MAI 'O IA. NOHO 'O IA I (PLACE OF  
CURRENT RESIDENCE). HE (OCCUPATION/SOCIAL ROLE)  
NŌ HO'I 'O IA. HE (AGE) ONA MAKAHIKI. HE (HIS/HER  
FAMILY ROLE) 'O IA NO KO'U (ANOTHER FAMILY MEMBER).



## KA PILINA 'OHANA: KINSHIP TERMS

The following Hawaiian words show the relationships among members of the same 'ohana. They are more specific than the corresponding English terms, as the Hawaiian words for siblings include information about age and gender.

- KUPUNAHINE: GRANDMOTHER
- KUPUNAKĀNE: GRANDFATHER
- MAKUAHINE: MOTHER/AUNTY
- MAKUAKĀNE: FATHER/UNCLE
- KEIKI KĀNE: SON/CHILD
- KAIKAMAHINE: DAUGHTER
- KAIKUA'ANA: OLDER SIBLING OF THE SAME GENDER
- KAIKAINA: YOUNGER SIBLING OF THE SAME GENDER
- KAIKUNĀNE: BROTHER OF A FEMALE
- KAIKUAHINE: SISTER OF A MALE
- HĀNAU MUA: OLDER (EXAMPLE: KAIKUNĀNE HĀNAU MUA: OLDER BROTHER OF A FEMALE)
- HĀNAU HOPE: YOUNGER (EXAMPLE: KAIKUAHINE HĀNAU HOPE: YOUNGER SISTER OF A MALE)
- HIAPO: FIRST-BORN CHILD
- MULI LOA: YOUNGEST CHILD

E HO'I HOU MAI I KĒIA MAHINA A'E!

BE SURE TO VISIT US AGAIN NEXT MONTH FOR A NEW HA'AWINA 'ŌLELO HAWAI'I (HAWAIIAN LANGUAGE LESSON)!